



Feeling the Beating of the Heart



**TROLLEY
FULL DIGITAL
COLOR ULTRASOUND
DIAGNOSTIC APPARATUS**



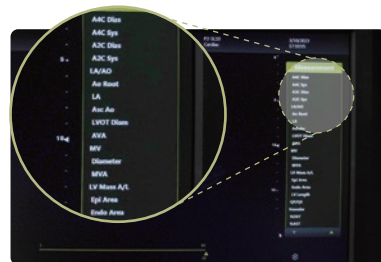
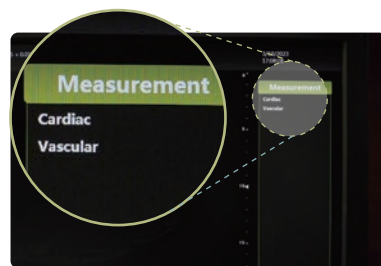
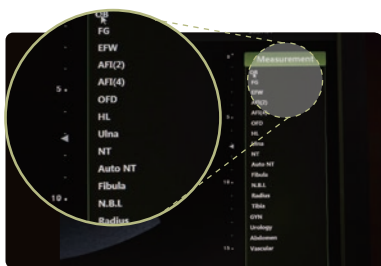
Cardiology

This device model is a high-end color Doppler ultrasound that integrates multiple technologies and performs excellently in cardiac ultrasound.



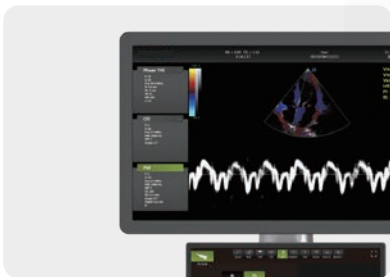
Specialist Measurement

- Comprehensive Cardiac measurement package, covering all information of doctor's diagnosis. Such as: aortopulmonary artery inner diameter, left ventricular myocardial performance index, etc.



- Other professional measuring package: OB, GYN, Vascular, Urology, Abdomen, etc.

Unbelievable Design



> 21.5 inch medical HD display



> 13.3-inch touch screen
(45°adjustable)



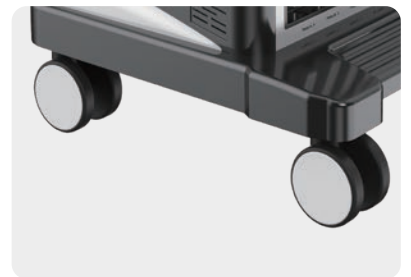
> Operation panel 110° horizontally adjustable & 18cm vertically lifting



> Detachable probe hanging slot

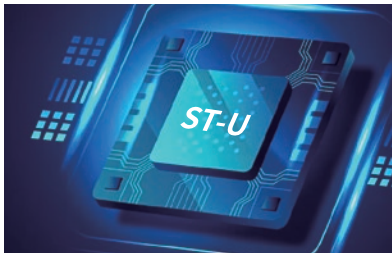


> 4 active probe interfaces



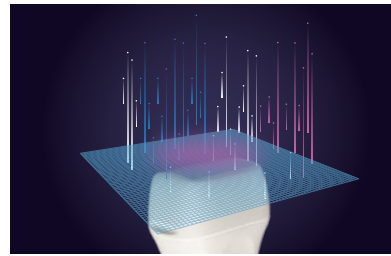
> Flexible casters, directional lock

Innovative Platform



ST-U Technology Platform

- CPU+GPU dual-core processing architecture
- Clearer imaging, faster response



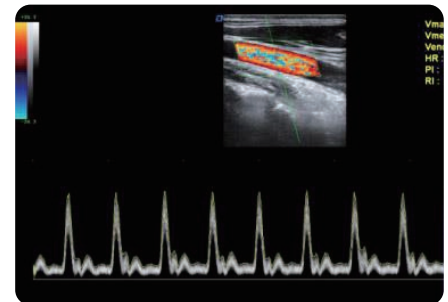
High-end Probes

- A/D conversion system+beam reconstruction technology
- Higher image resolution, more accurate clinical diagnosis

Convenient Application

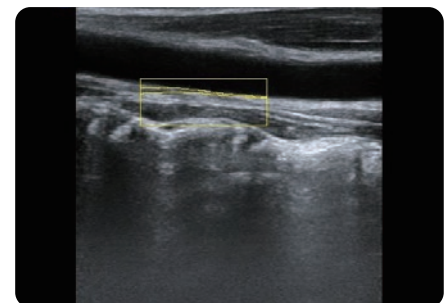
Spectrum Envelope Function:

- Real-time, manual, etc. optional modes



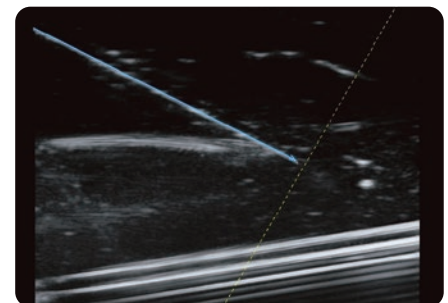
Auto IMT measurement:

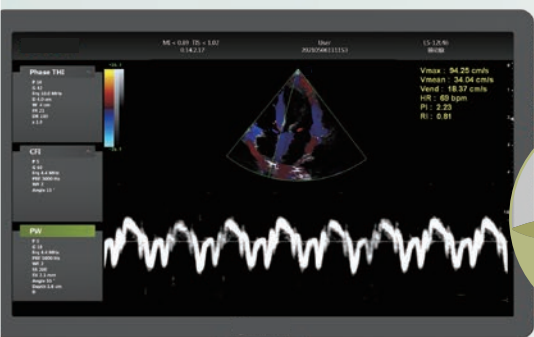
- Optimizing the angle of measurement automatically



Raw data processing:

- Offline parameter analysis of static files and replayed dynamic images





SSD
128G

SSD 128GB+ HDD 1TB:

Fast and stable startup



DICOM 3.0:

- Ready to connect with PACS of hospitals



10 Languages :

- ZH/EN/VI/DE/FR/ES/RU/AR/PT/ID

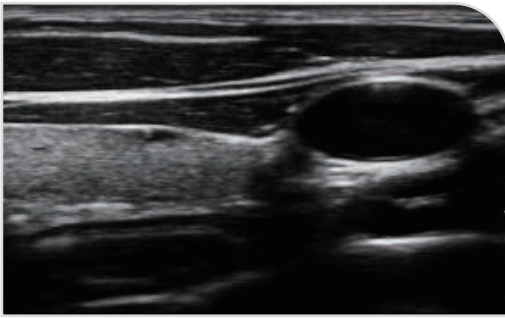


Optimised Image Condition Preseting:

- Reducing duplication adjustment

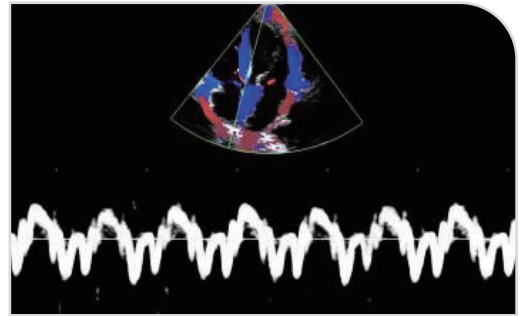


Advanced Technology



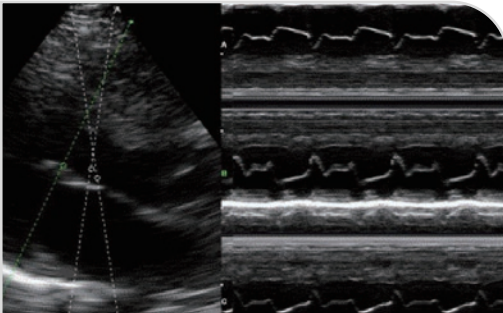
Fusion Harmonic Imaging (FHI)

FHI is a new harmonic imaging technology to reduce noise through the optimized filter, for automatically detecting the contour and getting a clearer image.



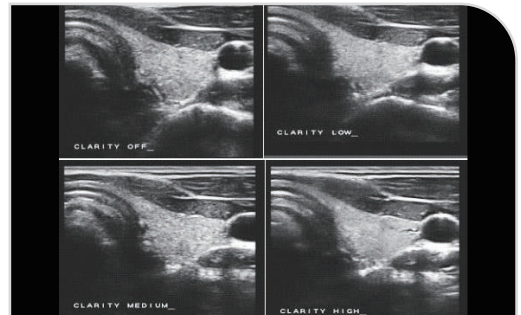
Tissue Doppler Imaging (TDI)

It uses the Doppler principle to estimate tissue motion to obtain motion information and generate color-coded images of tissue motion speed.



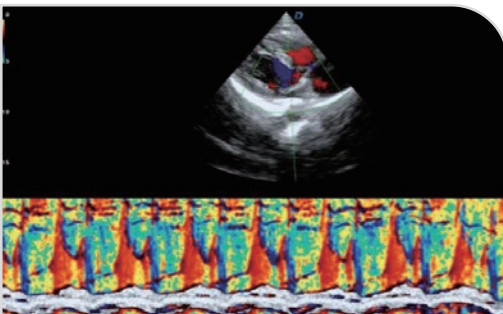
Anatomical 3M Imaging

It is Omniview technology, which is not restricted by three orthogonal planes, the technology of artificially cutting volume data in any direction and angle through straight lines, curves, polylines, and trajectories of any plane or angle, so as to obtain any imaginary plane.



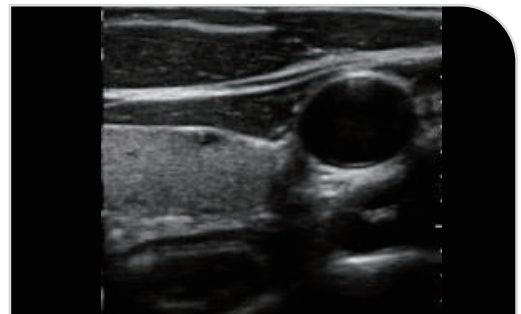
Speckle Reduce imaging (SRI)

Speckle Reduction Imaging is a new algorithm that improves the image quality of B-mode scanning by reducing reverberation artifacts. It helps heighten the visibility of organs and lesions by suppressing noise.



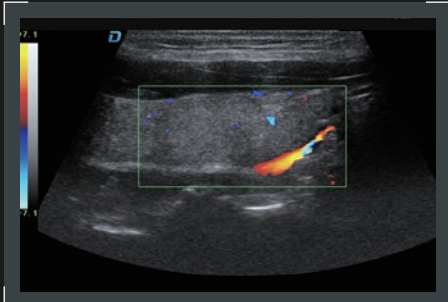
Color-M mode (MC)

It is used for cardiac examination. Color blood flow uses speed and variance color maps to make colors superimposed on M mode images. Color blood flow covers B-mode images and M-mode timeline.

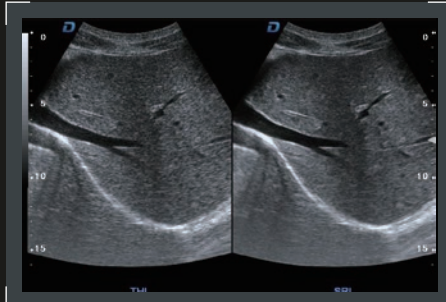


Space Composite Imaging Technology

It can enhance the signal of the tissue boundary through the deflection of the sound beam, reduces the phenomenon of side wall echo loss, and makes the boundary of the tissue clearer.



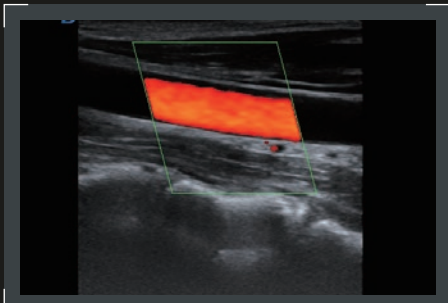
Trapezoidal Imaging



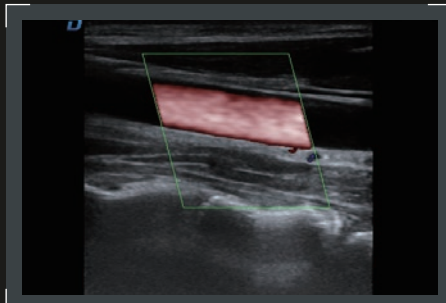
B/SRI: real-time dual image display



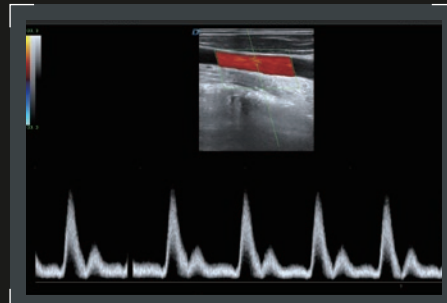
Panoramic imaging



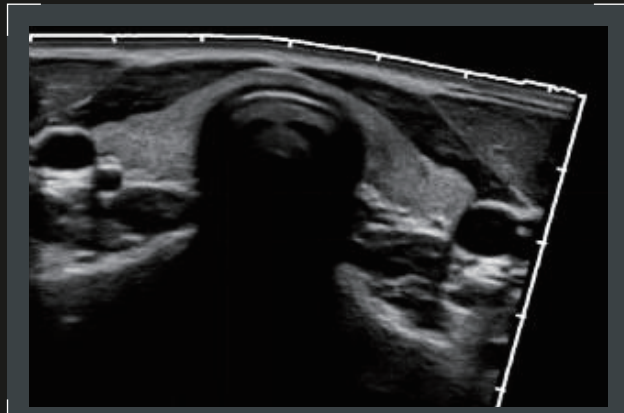
Power Doppler imaging (PDI)



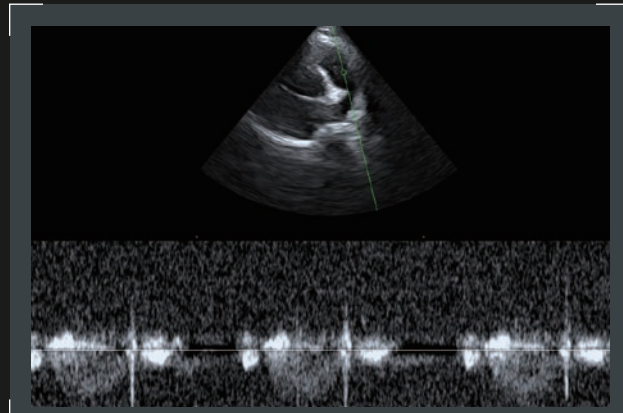
Direct power Doppler imaging (DPDI)



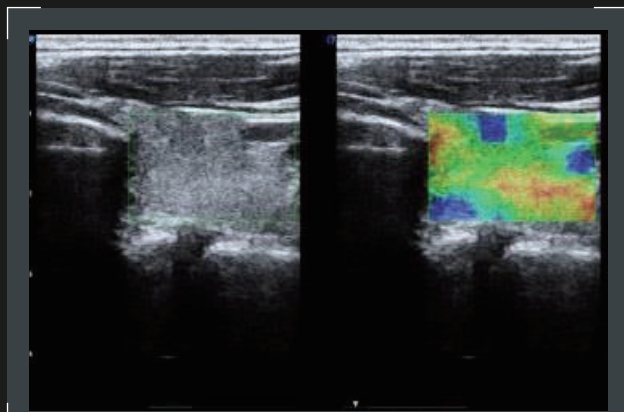
Triplex Imaging



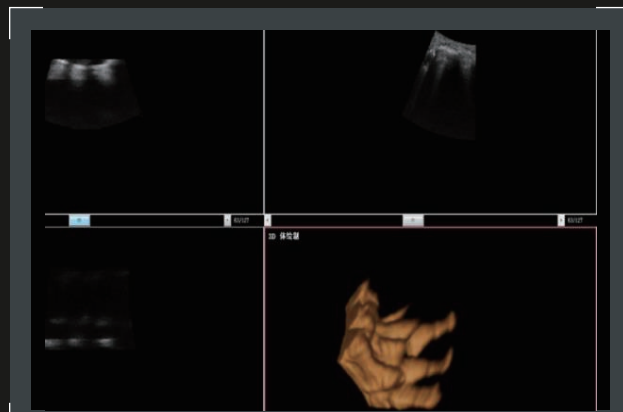
Wide-field Imaging (WFOV)



Continuous Wave Doppler (CW)



Elastography Imaging



Real time 4D

Showing Optional Probes



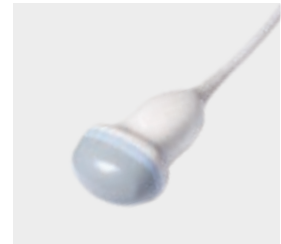
Convex probe
Abdomen, obstetrics,
gynecology



Linear probe
Vascular,
Musculoskeletal



Phased array probe
Heart and chambers,
cardiac function,
pericardia, effusion



4D-volume probe
Fetal



Trans-vaginal probe
Obstetrics, gynecology,
urology



Trans-rectal probe
Prostate gland



Micro-convex probe
Baby organs



High frequency linear probe
Interventional ultrasound



Hockey stick probe
Interventional ultrasound



Bi-Plane probe
Andrology